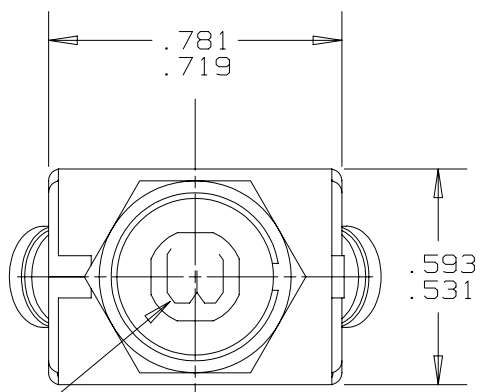
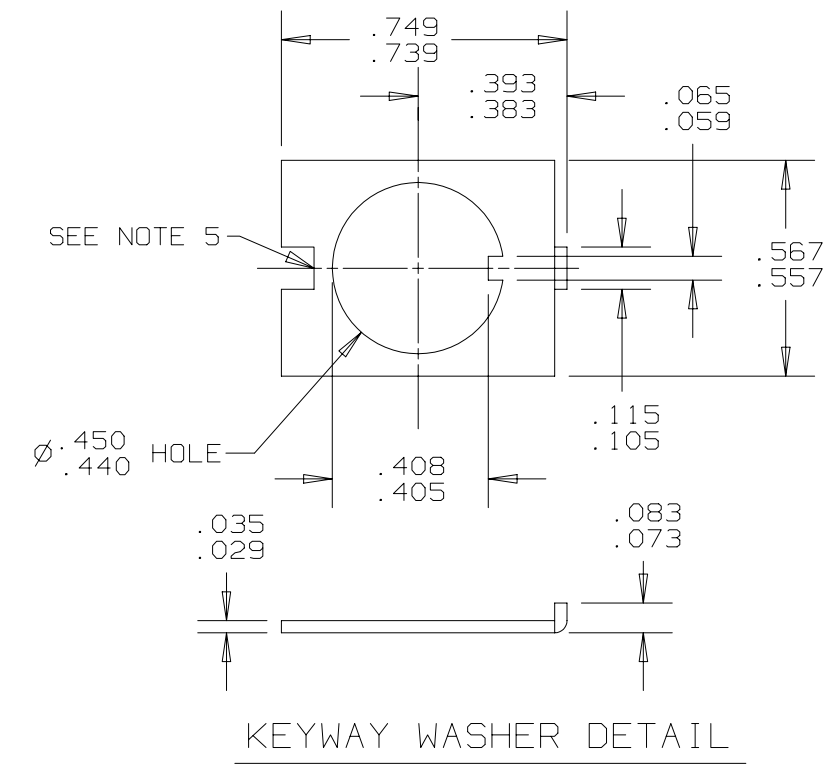
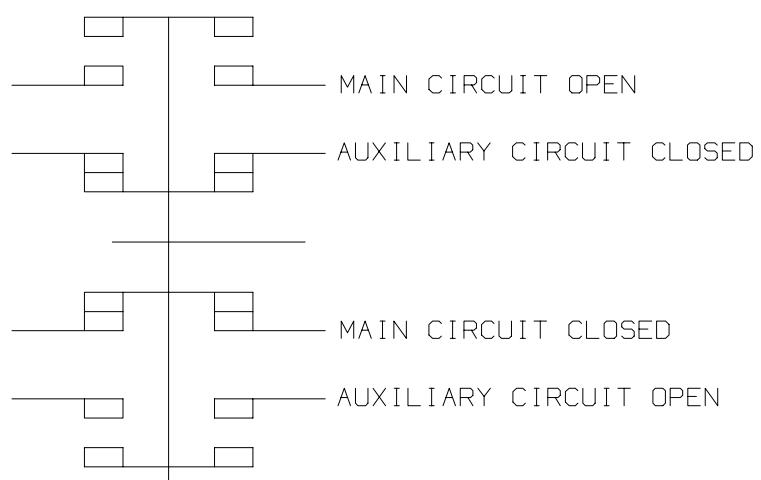


REVISIONS					
ZONE	LTR	DESCRIPTION	PROJ. 343B	DATE	APPROVED
	U	ADDED PART NO. AND DATE CODE	CRM46903 JRB	11-5-99	K.H.S.



3 AMP RATING SHOWN

PERFORMANCE CHARACTERISTICS (DETAIL PERFORMANCE PER MIL-C-5809)

OVERLOAD CYCLING	-----	100 CYCLES AT 200% RATING
SINUSOIDAL VIBRATION	-----	10 G'S 50-500 HZ
MECHANICAL SHOCK	-----	30 G'S AT 11.0 MILLISECOND DURATION
ACCELERATION	-----	10 G'S MINIMUM
SAND AND DUST	-----	12 HOURS
CORROSION	-----	SALT SPRAY 48 HOURS
HUMIDITY	-----	10 DAYS
EXPLOSION PROOF	-----	WHILE INTERRUPTING RUPTURE CURRENTS
MOUNTING NUT TORQUE	-----	40 LB.-IN. MAX.

MAXIMUM OPERATING ALTITUDE: 80,000 FT. (24,384 M)

WEIGHT: 28.0 GRAMS MAX.

MAXIMUM OPERATING FORCES:  
 PULL OUT ----- 5 LBS. MAX. (22.2 N)  
 RESET ----- 5 LBS. MAX. (22.2 N)

ENDURANCE:

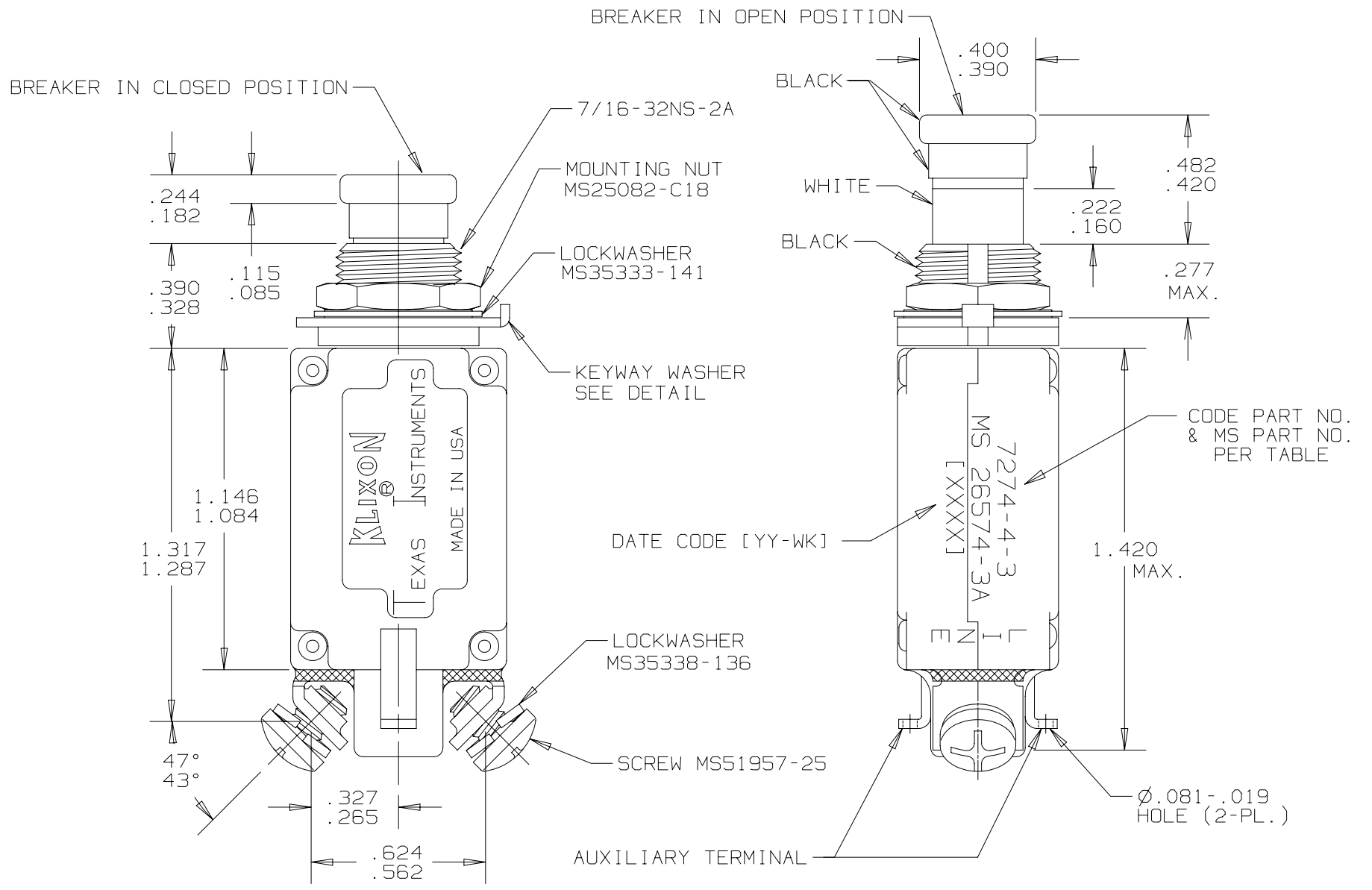
120 VAC	-----	400 HZ	INDUCTIVE	-----	2500 CYCLES
120 VAC	-----	400 HZ	RESISTIVE	-----	5000 CYCLES
30 VDC	-----		INDUCTIVE	-----	2500 CYCLES
30 VDC	-----		RESISTIVE	-----	5000 CYCLES
NO LOAD	-----		MECHANICAL	-----	5000 CYCLES

AUXILIARY CIRCUIT ENDURANCE

5 - 120 VAC	INDUCTIVE	2 AMP	5000 CYCLES
	RESISTIVE	3 AMP	5000 CYCLES
5 - 30 VDC	INDUCTIVE	3 AMP	5000 CYCLES
	RESISTIVE	5 AMP	5000 CYCLES

CALIBRATION:

AMBIENT TEMP.	HOLD	TRIP	200%	500%	1000%
+25°C (+77°F)	115% RATING	150% RATING	2-20 SEC.	.16-1.2 SEC.	.046-0.8 SEC.
-55°C (-67°F)	135% RATING	180% RATING	-----	-----	-----
+71°C (+160°F)	90% RATING	130% RATING	-----	-----	-----



PART NO.	MS PART NO.	AMP RATING	MAXIMUM VOLTAGE DROP	CURRENT INTERRUPTING CAPACITY	
				120 VAC, 400 HZ	28 VDC
7274-4-1/2	MS 26574-1/2A	1/2	2.00	UNLIMITED	UNLIMITED
7274-4-3/4	MS 26574-3/4A	3/4	1.45	UNLIMITED	UNLIMITED
7274-4-1	MS 26574-1A	1	1.10	UNLIMITED	UNLIMITED
7274-4-1 1/2	MS 26574-1 1/2A	1 1/2	0.75	UNLIMITED	UNLIMITED
7274-4-2	MS 26574-2A	2	0.75	800 AMPS	UNLIMITED
7274-4-2 1/2	MS 26574-2 1/2A	2 1/2	0.70	800 AMPS	UNLIMITED
7274-4-3	MS 26574-3A	3	0.55	800 AMPS	UNLIMITED
7274-4-4	MS 26574-4A	4	0.45	800 AMPS	UNLIMITED
7274-4-5	MS 26574-5A	5	0.35	800 AMPS	UNLIMITED
7274-4-7 1/2	MS 26574-7 1/2A	7 1/2	0.30	500 AMPS	2000 AMPS
7274-4-10	MS 26574-10A	10	0.28	500 AMPS	2000 AMPS
7274-4-15		15	0.25	500 AMPS	2000 AMPS
7274-4-20		20	0.25	500 AMPS	800 AMPS

NOTES:

- ALL MOUNTING HARDWARE HAS A DULL BLACK FINISH.
- CIRCUIT BREAKERS ARE SUITABLE FOR MOUNTING IN A 1/8" THICK PANEL OR LESS.
- EPOXY SURFACES ARE NON-DIMENSIONED. ENVELOPE DIMENSIONS DO NOT APPLY TO THESE PROJECTED EPOXY SURFACES.
- 1/2 THRU 10 AMP CIRCUIT BREAKERS ARE QUALIFIED TO MS 26574.
- NON FUNCTIONAL NOTCH ON THE BACK OF THE KEYWAY WASHER IS OPTIONAL.
- DATE CODE PER 105288-285.

SUPERSEDES DWG. 7274-4 REV. "T", DATED 9-9-97

UNLESS OTHERWISE SPECIFIED DIMENSIONS ARE IN INCHES		DRAWN TOM DAIL	DATE 1-14-91	 TEXAS INSTRUMENTS ATTLEBORO, MASSACHUSETTS 02703  CONTROL PRODUCTS DIVISION
TOLERANCE ON FRACTIONS DECIMALS ANGLES		ENGINEER K.B. GASSER	DATE 11-4-92	
MATERIAL		APPROVED	APPROVED	TITLE 7274-4 STYLE CIRCUIT BREAKER PUSH-PULL, TRIP FREE ENVELOPE DRAWING
		SIGNATURES ON FILE. REFER TO ELECTRONIC CHANGE NOTICE.		SIZE CODE IDENT NO. C 82647
				7274-4