

CHARACTERISTICS:

CONTACT ARRANGEMENT	4 P.D.T.
ACTUATION FORCE	10 LBS. MAX.
RELEASE FORCE	1 LB. MIN.
PRETRAVEL	.020-.030
MOVEMENT DIFFERENTIAL	.020 MAX.
OVERTRAVEL	.200 MIN.
LIFE AT RATED LOAD	25,000 CYCLES
AMBIENT TEMPERATURE RANGE	-85°F TO +275°F
DIELECTRIC STRENGTH ACROSS:	
OPEN TERMINALS	800 VRMS
TERMINALS TO CASE	1000 VRMS
VOLTAGE DROP AT 1 AMP	.040 PLUS .011 PER FOOT OF LEAD
SEAL	CLASS 5 (HERMETIC) PER MIL-S-8805
MAX. ALLOWED LEAKAGE	1X10 ⁻⁸ STD CC HE/SEC.
BACKFILL	DRY NITROGEN
MAX. FORCE ALLOWED ON TOP OF ACTUATOR	30 LBS.

CURRENT CAPACITY

SEA LEVEL AND 70,000 FT. ALTITUDE		
LOAD	28 VOLTS D.C.	
RESISTANCE	4 AMPS	
INDUCTIVE LAMP	1 AMP	2 AMPS

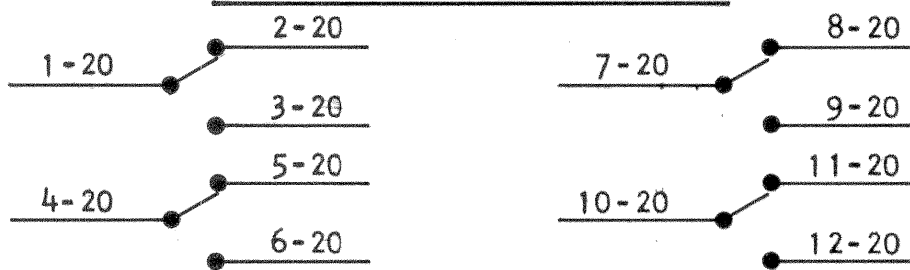
SHOCK RESISTANCE

WITHOUT CONTACT CHATTER	200 G'S
VIBRATION RESISTANCE (10-3000 HZ)	
WITHOUT CONTACT CHATTER	65 G'S
WEIGHT (INCLUDING HARDWARE)	3.4 OZ. PLUS .10 OZ. PER LEAD PER FT. OF WIRE

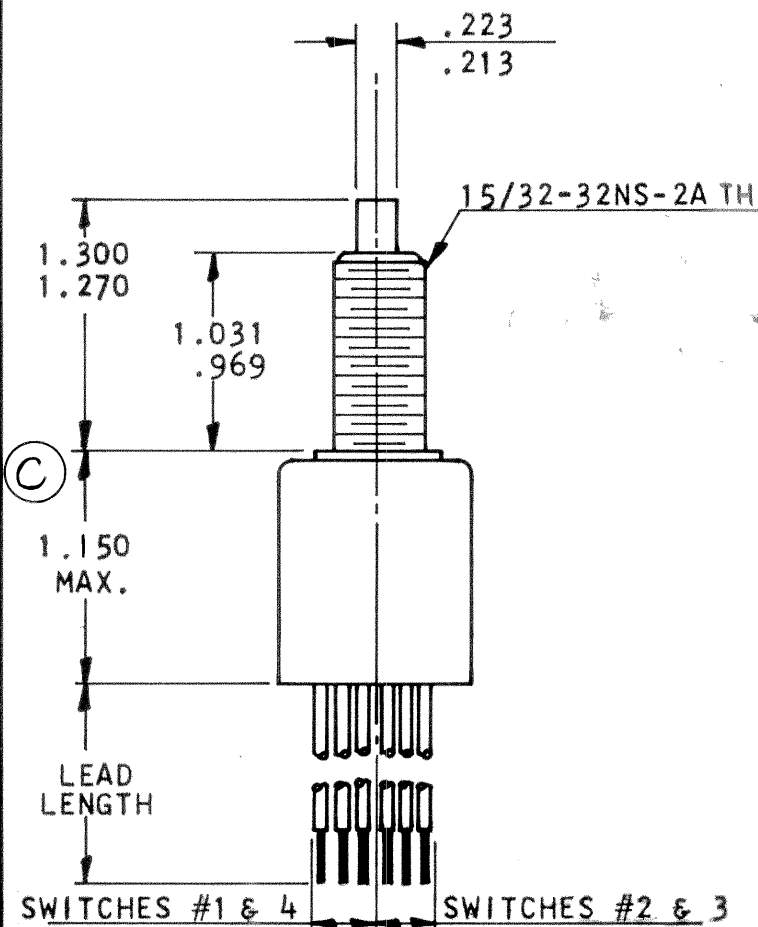
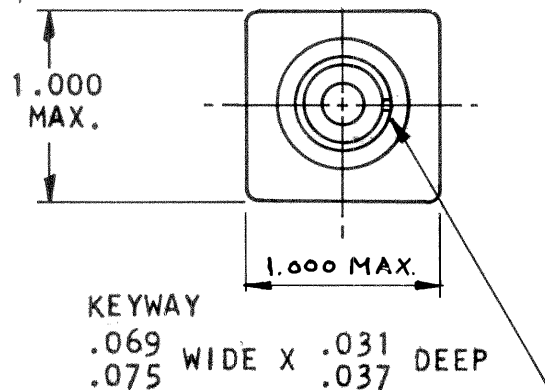
MOUNTING HARDWARE STANDARD ON ALL SWITCHES

ITEM	REQ'D	DESCRIPTION
HEX NUT	(2)	MS21340-04
INTERNAL LOCKWASHER	(1)	MS35333-121
KEYWASHER	(1)	MS25081-C4

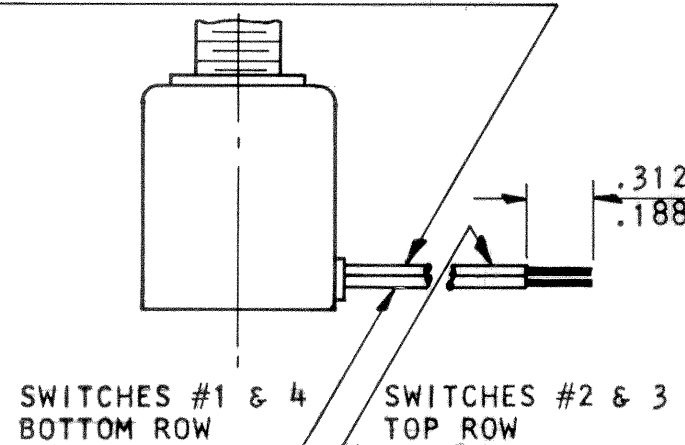
CIRCUIT DIAGRAM



G	MIL-W-22759/9 WAS MIL-W-10878/5 (TYPE EE) CR MO 5844	7-16-91	CF
H	RESISTANCE WAS 7AMPS, 10AT 375-8 WAS 3PDT-N.C. & -9 WAS 3PDT-N.O. (RM21838 RJM)	3-16-95	JF
J	MIL P/N WAS M8805/70-029,031 CRM25154 RJM	1-17-96	JF



AWG #20 WIRE LEADS PER MIL-W-22759/9 CODED EVERY 6 INCHES PER CIRCUIT DIAGRAM



10AT375 -102-*	10AT375 -103-*
MILITARY EQUIVALENT PART NUMBERS UNDER MIL-S-8805	
T.I. PART NO.	MILITARY PART NO.
10AT375-102-10	M8805/70-037
10AT375-103-10	M8805/70-039

REVISIONS				
ZONE	LTR	DESCRIPTION	DATE	APPROVED
		1ST ISSUE FOR 10AT375 C.R. 51836	8-30-73	D.F.
-	A	ADDED MIL. PART NOS. CR 52027	1-17-74	JF
-	B	SEE CN CR 55474	7-12-74	JF
-	C	DIM WAS 1.050 MAX CR 54791	7/15/74	D.F.
-	D	PRETRAVEL WAS .030 MAX CR 70847	9-1-76	DR
-	E	SEE CN CR 99797	3-5-85	ADS
-	F	SEE CN CR 90816	1-15-86	PJM

10AT	375	-10	2	-1
BASIC SWITCH	CONFIGURATION	7=3PDT 8=3PST-N.C. 9=3PST-N.O. 10=4PDT 11=4PST-N.C. 12=4PST-N.O.	2=LEADS PARALLEL TO AXIS OF SWITCH 3=LEADS AT RIGHT ANGLE TO AXIS OF SWITCH	1= 6" MIN. 2=12" 3=18" 4=24" 5=30" 6=36" 7=42" 8=48" 9=60" 10=72"

UNLESS OTHERWISE SPECIFIED DIMENSIONS ARE IN INCHES	BY D.M. INERNEY	DATE 8-30-73	Q3-1 P18-1	P3-2
TOLERANCE ON FRACTIONS DECIMALS ANGLES	ENR. D. Latem	9-4-73	TEXAS INSTRUMENTS INCORPORATED ATTLEBORO, MASSACHUSETTS, U.S.A.	
MILITARY EQUIVALENT PART NUMBERS UNDER MIL-S-8805			KLIXON CONTROL PRODUCTS DIVISION	
T.I. PART NO. MILITARY PART NO.			TITLE 10AT375 PLUNGER SWITCH ENVELOPE DRAWING	
10AT375-102-10 M8805/70-037			SIZE B CODE IDENT NO. 82647	
10AT375-103-10 M8805/70-039			SCALE SHEET	
			10AT375	