

CHARACTERISTICS:

CONTACT ARRANGEMENT	S.P.D.T.
ACTUATION FORCE	6.5 LBS. MAX.
RELEASE FORCE	1.5 LBS. MIN.
PRETRAVEL	.020 MAX.
MOVEMENT DIFFERENTIAL	.010 MAX.
OVERTRAVEL	.125 MIN.
LIFE AT RATED LOAD	25,000 CYCLES
AMBIENT TEMPERATURE RANGE	-85°F TO +275°F
DIELECTRIC STRENGTH ACROSS:	
OPEN TERMINALS	800 VRMS (5 SEC.)
TERMINALS TO CASE	1000 VRMS (5 SEC.)
MILLIVOLT DROP	.040 VOLTS AT 1 AMP (-01 ONLY)
SEAL	CLASS "5" HERMETIC PER MIL-S-8805B
MAX. ALLOWED LEAKAGE	1 X 10 ⁻⁸ STD. CC HE/SEC.
BACKFILL	DRY NITROGEN
FORCE ALLOWED ON TOP OF ACTUATOR	30 LBS. MAX.

MILITARY EQUIVALENT PART NUMBERS UNDER MIL-S-8805

T.I. PART NO.	MILITARY PART NO.
10AT7-02-10	M8805/73-013
10AT7-03-10	M8805/73-014

CURRENT CAPACITY

SEA LEVEL AND 70,000 FT. ALTITUDE		
LOAD	28 VOLTS DC	
RESISTIVE	4 AMP	
INDUCTIVE	1 AMP	
LAMP	2 AMP	

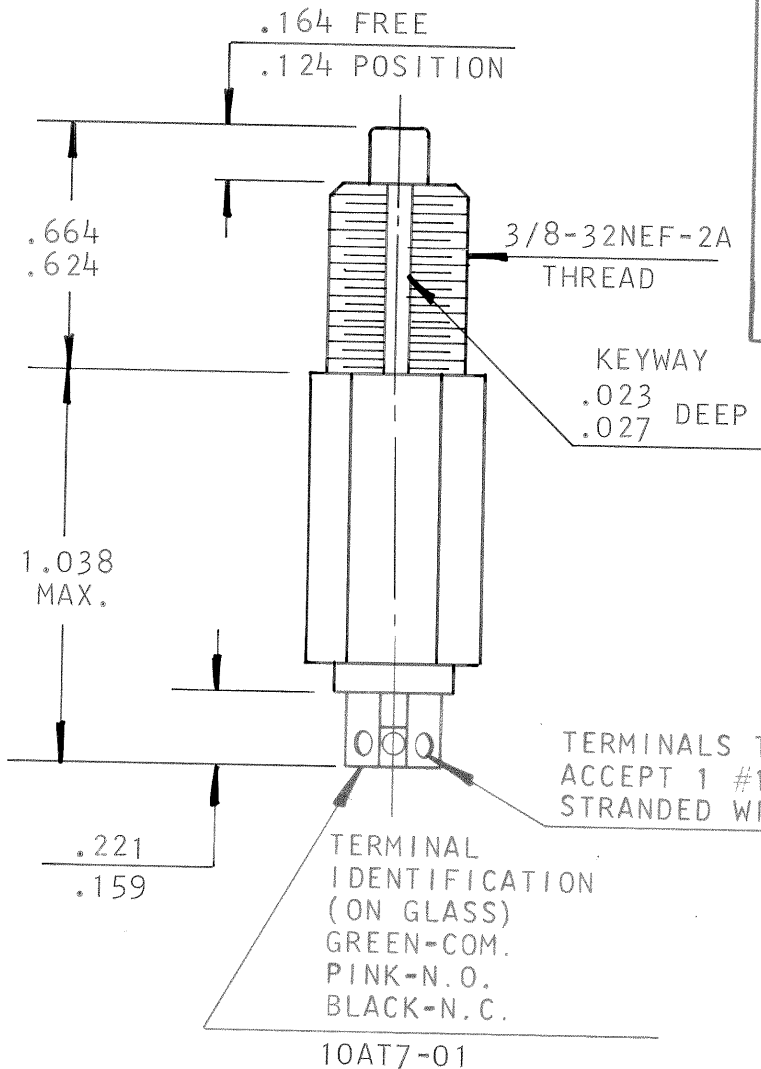
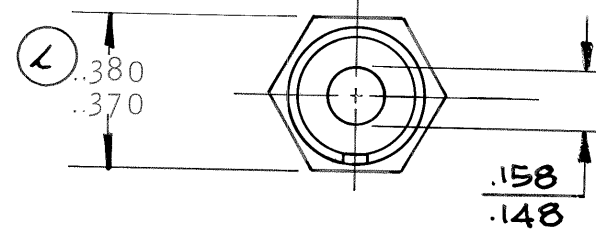
SHOCK RESISTANCE (WITHOUT CONTACT CHATTER)	200 G'S
VIBRATION RESISTANCE (55-2000 CPS) (WITHOUT CONTACT CHATTER)	65 G'S
WEIGHT (10AT7-01)	21.4 GMS

MOUNTING HARDWARE STANDARD ON ALL SWITCHES

ITEM	REQ'D	DESCRIPTION
HEX NUT	(2)	MS21340-03
INTERNAL LOCKWASHER	(1)	MS35333-42
KEYWASHER	(1)	SIMILAR TO MS25081 EXCEPT .390 I.D. AND .032 THICK

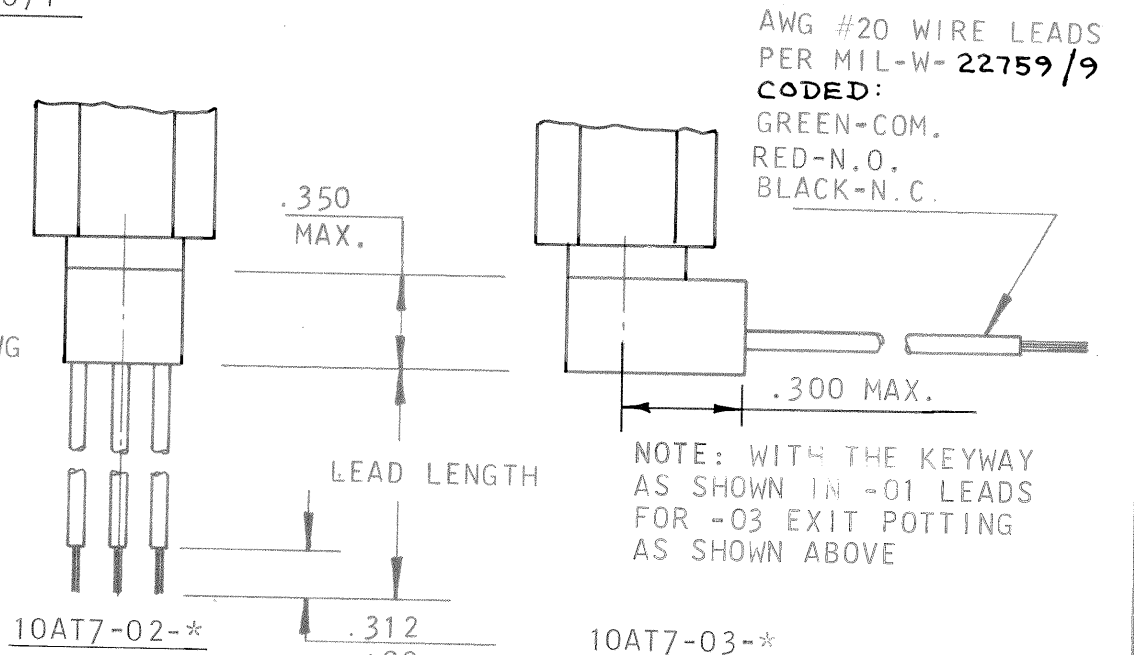
P	CHANGE WIRE LEAD EXAMPLE CR 270689843-2D S DR
R	NOTE FOR -03 WAS "KEYWAY LOCATION LR WITH RESPECT TO LEAD DIRECTION" CR 82715 RJM 11-29-82
T	SEE CN. CR 94707 3-4-85 N.A. M.J.F.
U	SEE CN CR 96816 1-15-86 M.J.F.

REVISIONS					
ZONE	LTR	DESCRIPTION	DATE	APPROVED	
-	H	REVISED REDRAWN C.R. 27655 J.F.	7-17-69	E.W.	KB
-	J	ADDED .158-.148 CR 40573 H	3-23-70	E.W.	KB
-	K	ADDED NOTE TO -03 C.R. 43308 R.G.M.	12-3-70	E.W.	KB
-	L	WAS .385/.365 CR. 51715 L.S.	7-3-73	J.F.	
-	M	SEE C.N. CR 43535 RN	7-9-74	D.P.	
-	N	SEE C.N. CR 55474 RN	7-12-74	D.P.	



10AT7-XX-X PART NO. EXAMPLE				
10AT	7-	-X	X	-X
BASIC SWITCH	ENVELOPE DRAWING	0 = SPDT 1 = SPST-N.C. 2 = SPST-N.O.	1=NO LEADS 2=LEADS PARALLEL TO AXIS OF SWITCH 3=LEADS AT RIGHT ANGLE TO AXIS OF SWITCH	1= 6" MIN. 2=12" 3=18" 4=24" 5=30" 6=36" 7=42" 8=48" 9=60" 10=72"

EXAMPLE: 10AT7-02-1/SPDT, LEADS PARALLEL TO AXIS, 6"



AWG #20 WIRE LEADS PER MIL-W-22759/9 CODED: GREEN-COM. RED-N.O. BLACK-N.C.

*SEE LEAD LENGTH TABLE

UNLESS OTHERWISE SPECIFIED DIMENSIONS ARE IN INCHES		BY <i>J. Pearson</i> DATE 7-17-69	TEXAS INSTRUMENTS INCORPORATED ATTLEBORO, MASSACHUSETTS, U.S.A.	KLIXON CONTROL PRODUCTS DIVISION
TOLERANCE ON FRACTIONS DECIMALS ANGLES		CH. <i>E. Whipple</i> 7-18-69		
MATERIAL		ENG. <i>E. Whipple</i> 7-18-69	TITLE HERMETICALLY SEALED S.P.S.T. OR S.P.D.T. SWITCH PLUNGER ACTUATED ENVELOPE DRAWING	
APPROVED <i>H. Boulanger</i> 7/21/69		SIZE B	CODE IDENT NO. 82647	10AT7
SCALE 2:1		SHEET		

MIL P/N WAS M8805/73-013-010 CRM2514 RJM 1-17-96